

Destructive Wildfires Are on the Rise



70,000

wildfires occur each year in the United States

NIFC

20 wildfire events causing **+\$1B** in damage between 1980 and 2021

NOAA

15 of those events were after the year 2000

NOAA

233% ↑

in wildfires since 1983

NIFC

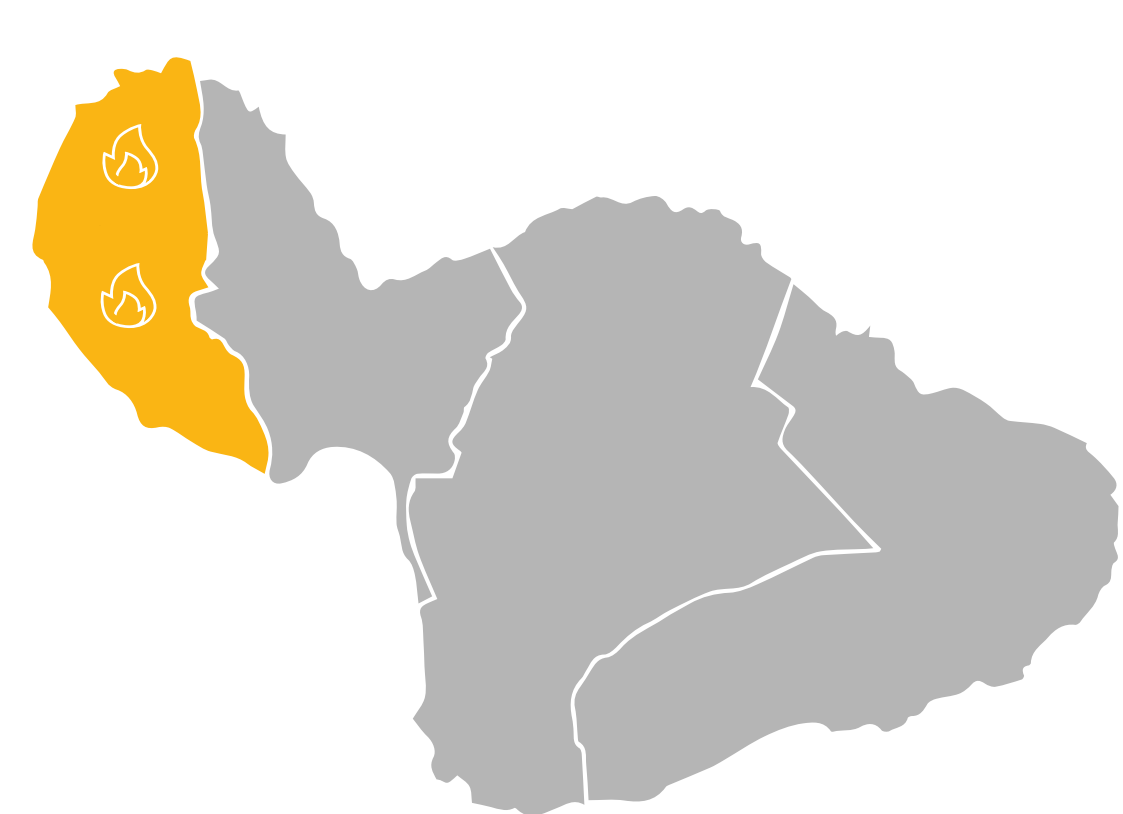


100+

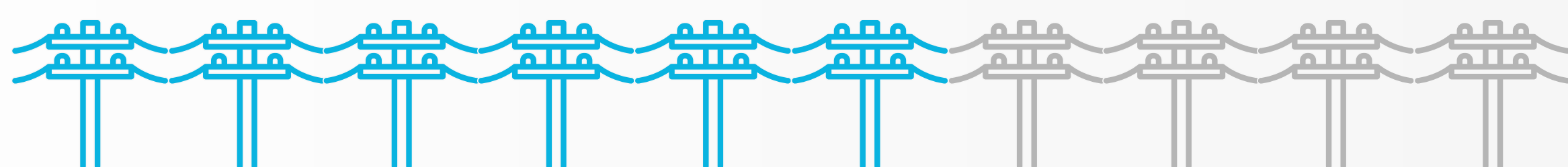
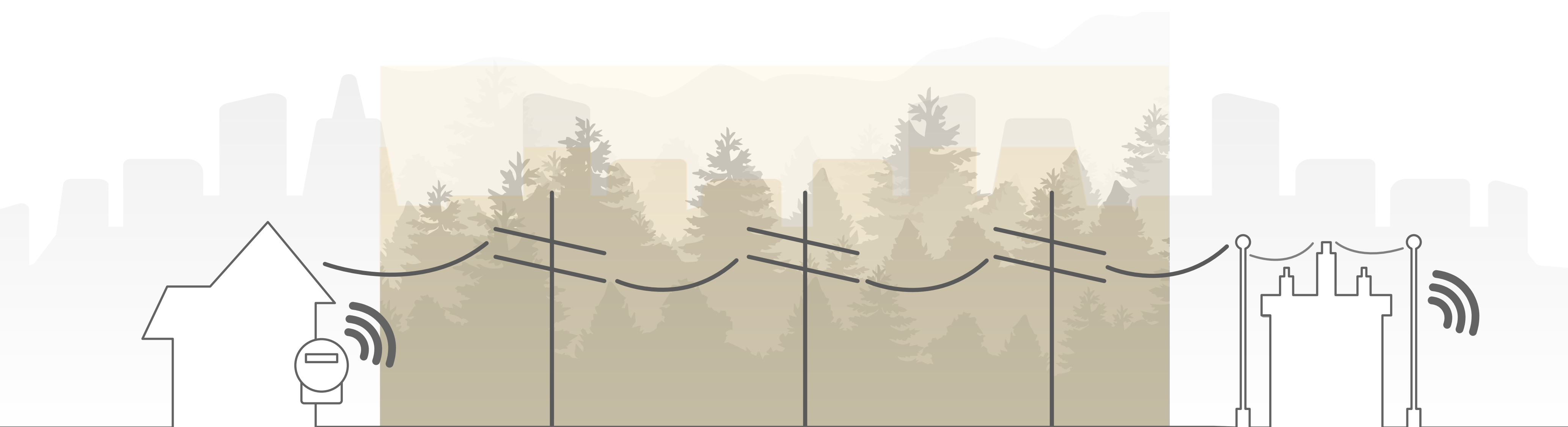
people killed

in Lahaina fires, the deadliest U.S wildfire in over a century

NPR



Assessing the Grid and Utility Risk



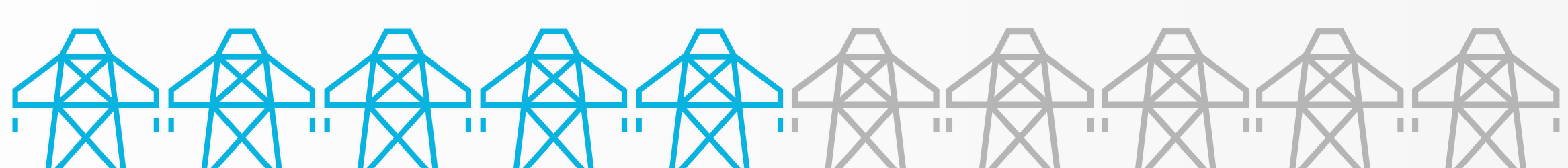
60% of the grid was built prior to 1980 and is not designed for 21st century weather

Unearth

4,000

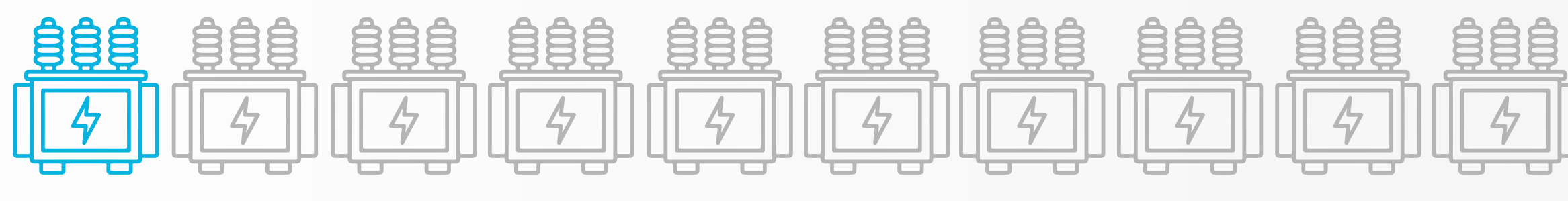
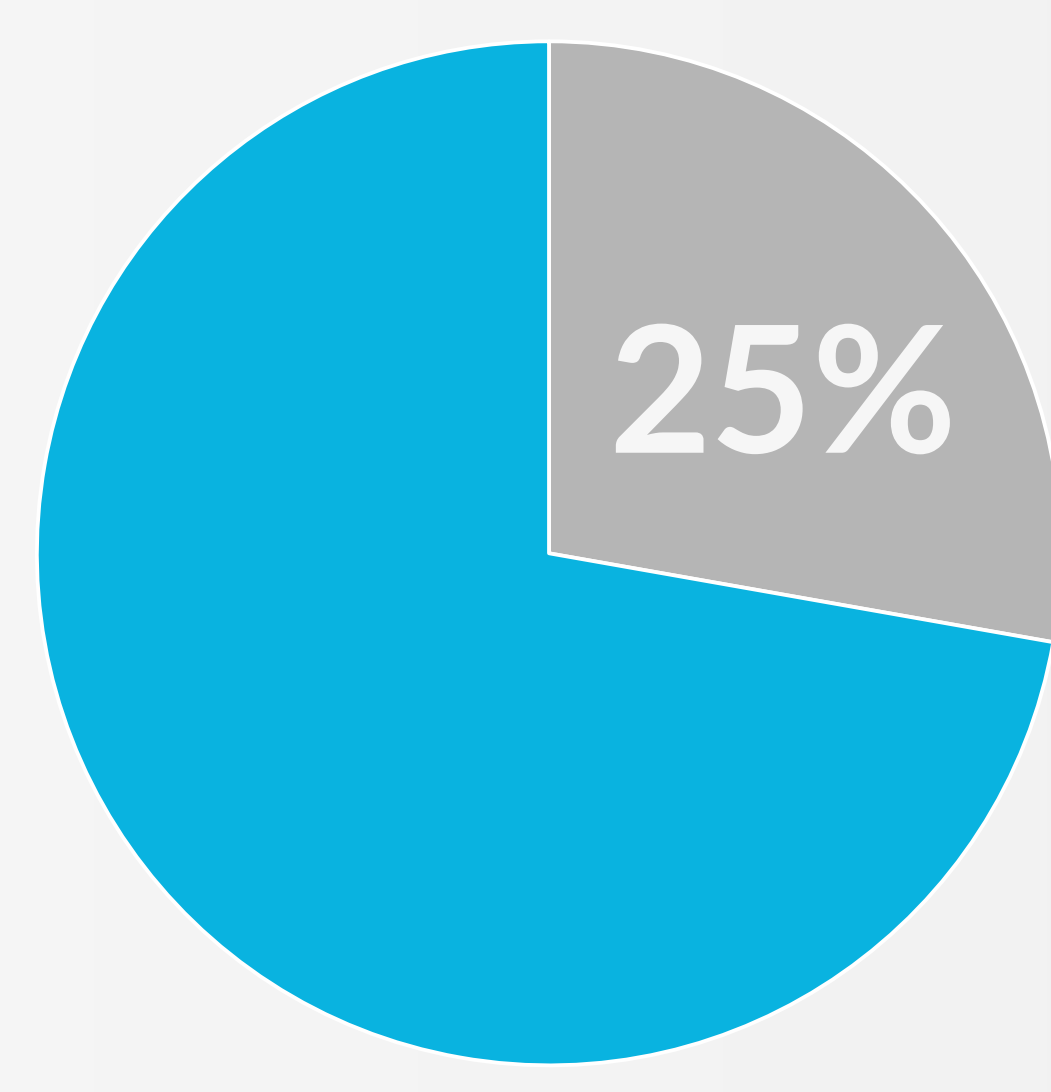
wildfires in Texas over the past three and a half years were caused by powerlines

TAMU



1/2 of the most destructive wildfires in California history were caused by utility infrastructure

CPUC

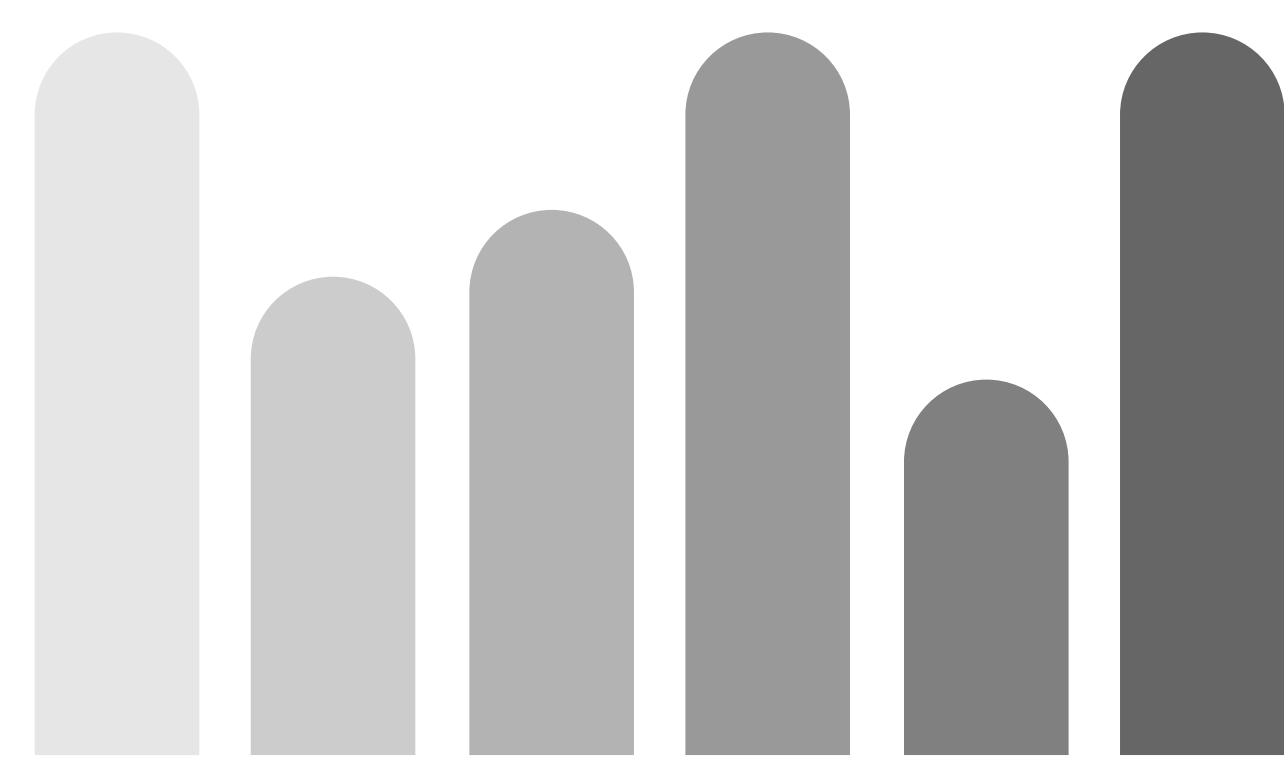


10% of current capacitor banks can fail each year, up to 10% of failures can cause fire ignitions

CPUC

of wildfire fatalities are from utility-related fires

CPUC



Measuring the Impact of Wildfires

\$125B

annual reduced earnings due to wildfire smoke

Stanford

A record

\$10B

in damages during 2018's Camp Fire

Bankrate

up to **2%**

increase in mortality observed with increase in particulate matter

NIH

Prevent, Respond, Recover



Ubicquia's UbiGrid solutions, including distribution transformer monitoring platform (DTM+) and utility pole tilt and vibration monitor (TVM), can help utilities spot wildfire danger in advance, such as vegetation problems, arcing, overheated transformers, downed poles, and tree slaps.



Ubicquia's UbiGrid solutions combined with UbiVu and UbiSmart Air Quality Monitor (AQM) help utilities quickly locate trouble spots such as ignition points, smoke detection, wind vibration, and distressed transformers to quickly alert authorities and dispatch crews.



Ubicquia's UbiGrid solutions can pinpoint damaged poles and transformers and deploy the right crews with the right equipment to the right place, speeding outage recovery efforts.